

May 31, 2018

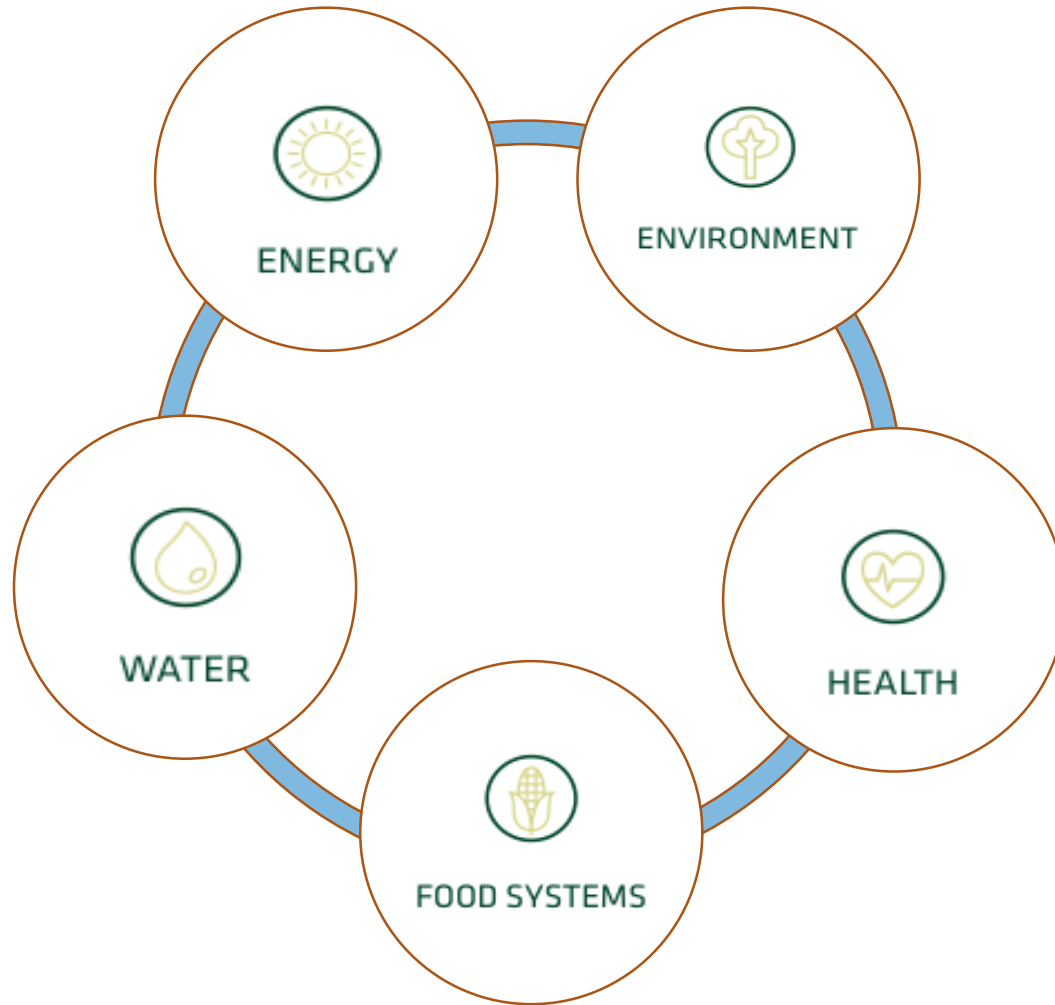


COLORADO STATE UNIVERSITY

CAC Update

IMAGINE. DISCOVER. CULTIVATE.

CSU THEMES AT THE NWC



CSU ANIMAL HEALTH FACILITY

- K-12 educational facilities and programs
- Equine sports medicine: supporting treatment for equine athletes
- Equine Assisted Therapy as part of the Temple Grandin Equine Center
- Small Animal Community Outreach Clinic

CSU WATER RESOURCES CENTER

- Policy Center
- Collaborative innovation/incubation space
- Community and educational space
- Research and teaching labs
- Commercial/Community Kitchen
- Denver Water's Water Quality Lab
- Professional development
- Outdoor research and learning



CSU WATER RESOURCES CENTER



- Policy Center
- Collaborative innovation and incubation space
- Community and educational space
- Research and teaching labs
- Commercial and Community Kitchen
- Denver Water's Water Quality Lab
- Professional development
- Outdoor research and learning

IMAGINE. DISCOVER. CULTIVATE.

WATER RESOURCES CENTER - SNAPSHOT

RESEARCH

- ONE WATER SOLUTIONS INSTITUTE (WSCOEE)
- WATER COLLABORATORY (CSU, CU, School of Mines, NREL)
- DENVER WATER RESEARCH
- OTHER RESEARCH (lease to private sector)

INNOVATION

OVERARCHING BUSINESS RESOURCES FROM COLLEGE OF BUSINESS

- AG INNOVATION CENTER (CAS, CHHS)
- WATER INNOVATION CENTER (Denver Water, CSU WSCOEE, Public Health)
- OTHER INNOVATION (e.g. One Health Institute? Others?)

POLICY

- CSU/DW POLICY CENTER (with partners)
 - STUDENT FELLOWS, VISITING SCHOLARS, CONVENING, ARCHIVES

EDUCATION

- K-12 with EXTERNAL PARTNERS (Water Education CO, SPREE, ELK, etc.)
- CSU HIGHER ED (graduate certificate, CSU Water Center programs)
- WORKFORCE DEVELOPMENT
- DATA ANALYSIS & VIZUALIZATION

COMMUNITY

- COMMUNITY KITCHEN
- COFFEE SHOP/CAFE
- PUBLIC MEETING SPACE
- OUTDOOR PLAY/PLAZA

COMMUNICATION

- WATER IN THE WEST SYMPOSIUM, ETC.

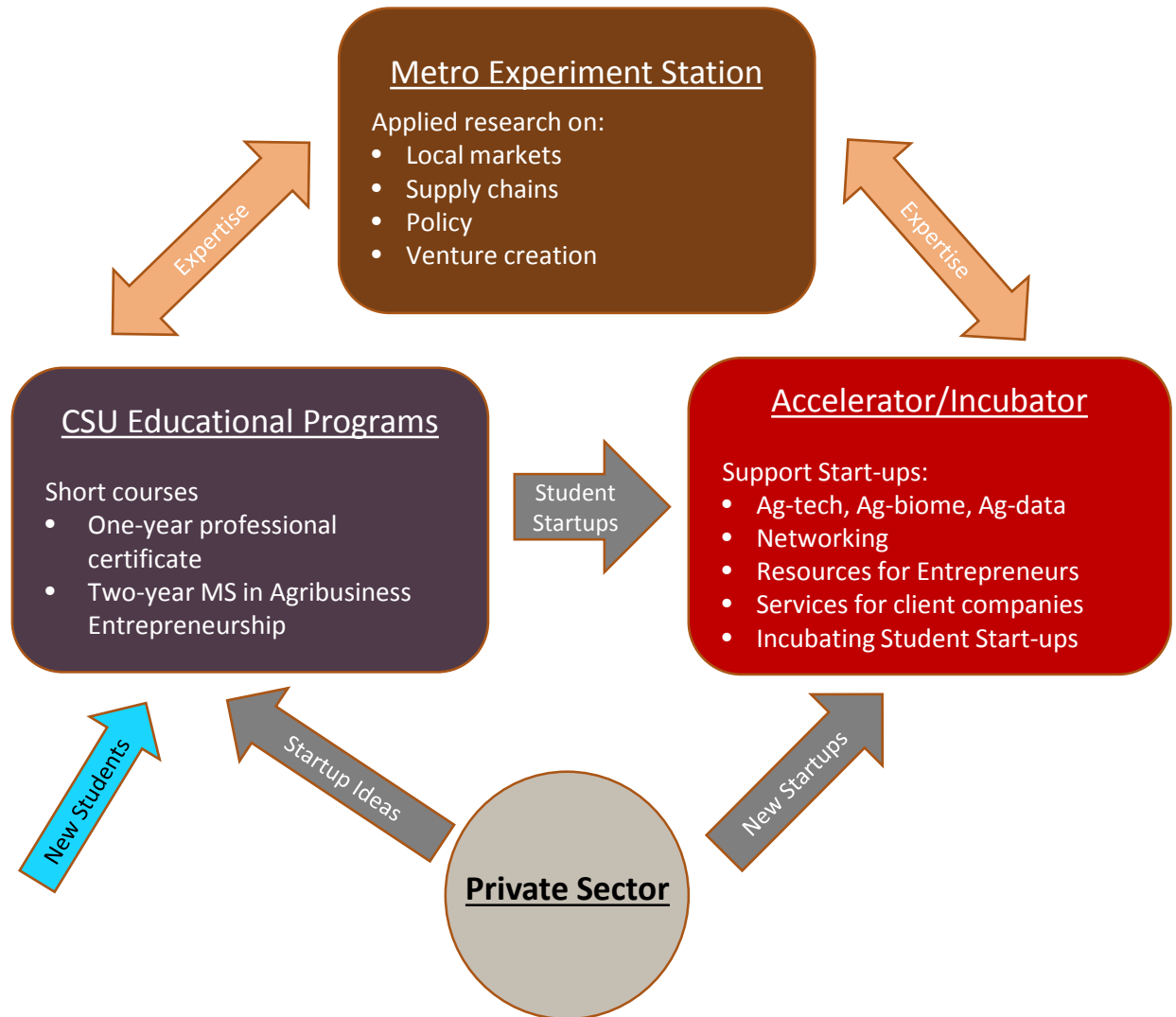
COMPLIANCE

- DENVER WATER'S WATER QUALITY COMPLIANCE LAB

FOOD/AG INNOVATION CENTER

Mission: supporting innovation and entrepreneurship in agriculture.

- Food research and outreach
- Venture accelerator program
- Graduate programs in Ag Entrepreneurship



WRC COMMUNITY SPACE

Possible Community Spaces:

- Community Kitchen
- Coffee Shop & Café
- Classroom & Meeting Rooms
- Outdoor Play & Education



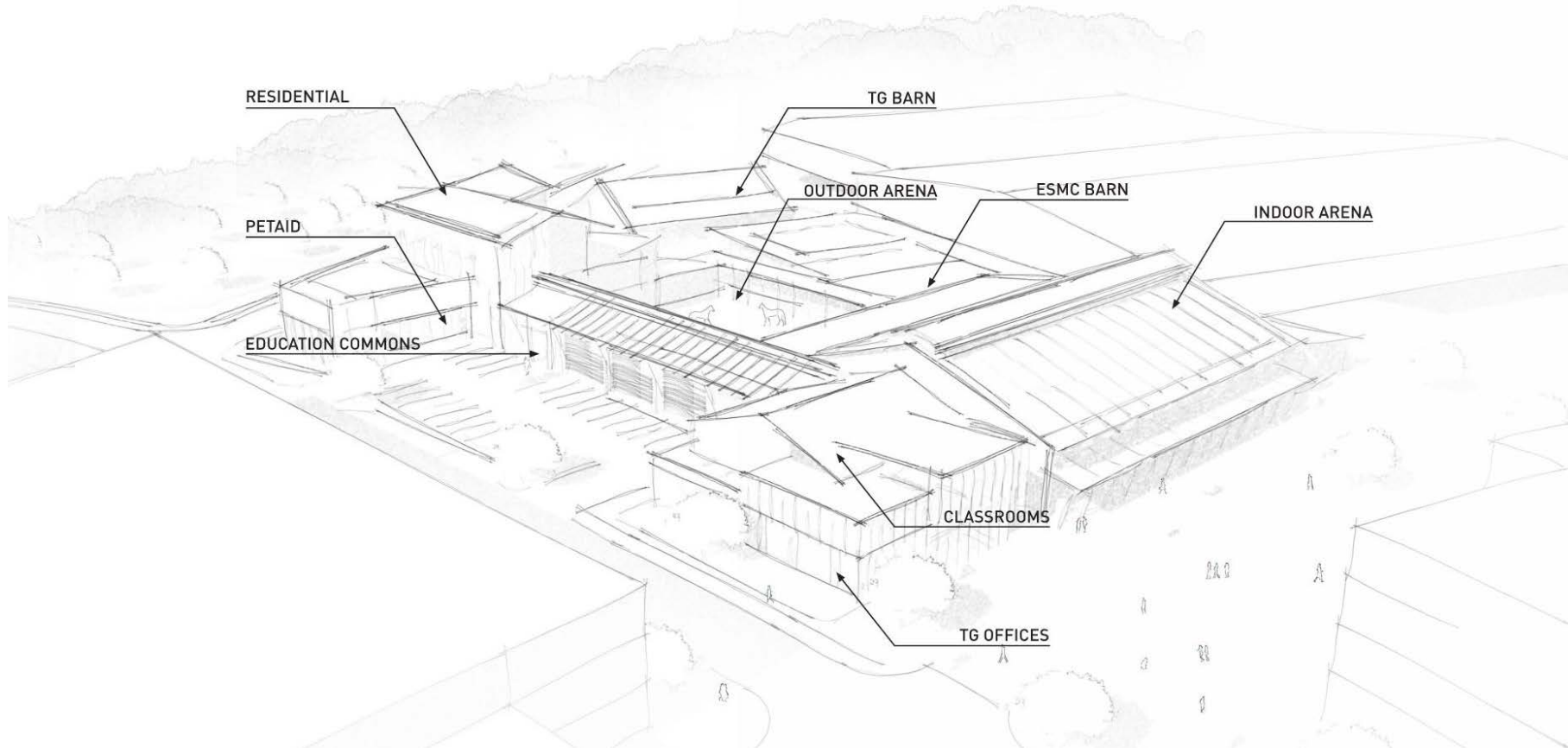
CSU ANIMAL HEALTH FACILITY

- K-12 educational facilities and programs
- Equine sports medicine: supporting treatment for equine athletes
- Equine Assisted Therapy as part of the Temple Grandin Equine Center
- Small Animal Community Outreach Clinic



IMAGINE. DISCOVER. CULTIVATE.

CSU ANIMAL HEALTH FACILITY- CONCEPTUAL

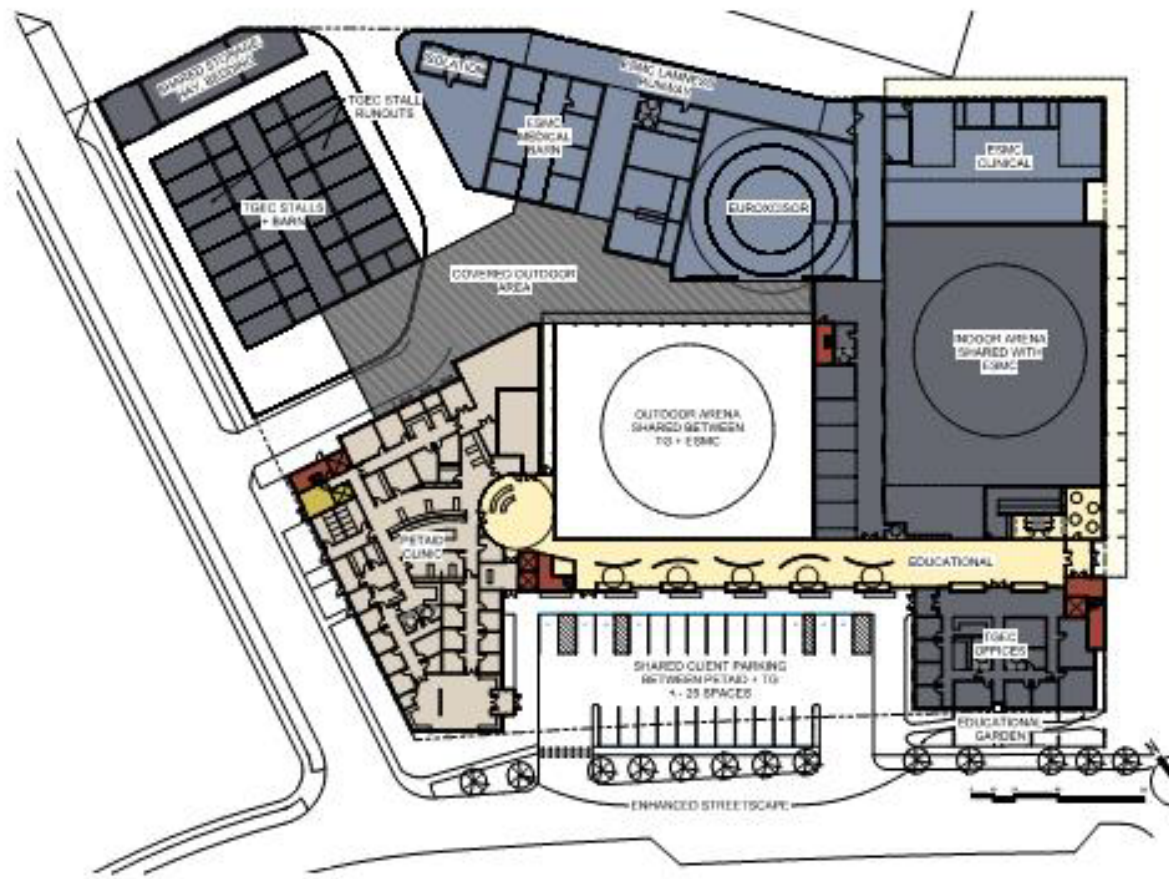


CSU ANIMAL HEALTH FACILITY- CONCEPTUAL



IMAGINE. DISCOVER. CULTIVATE.

CSU ANIMAL HEALTH FACILITY- CONCEPTUAL



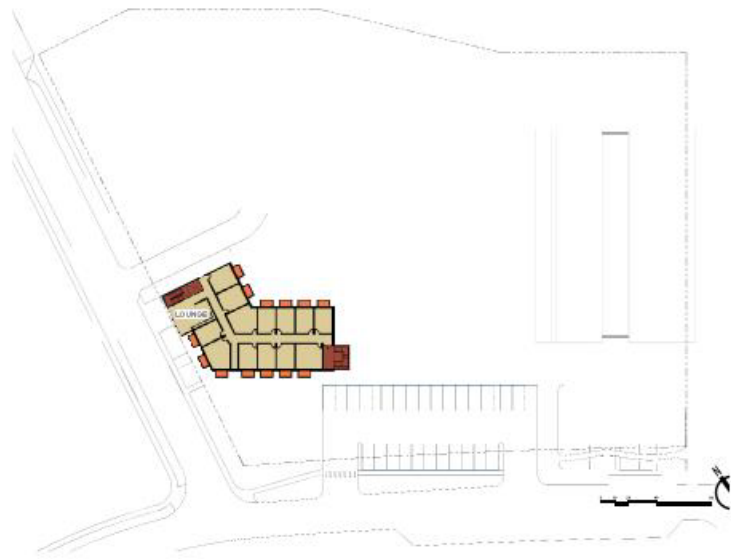
Level 1



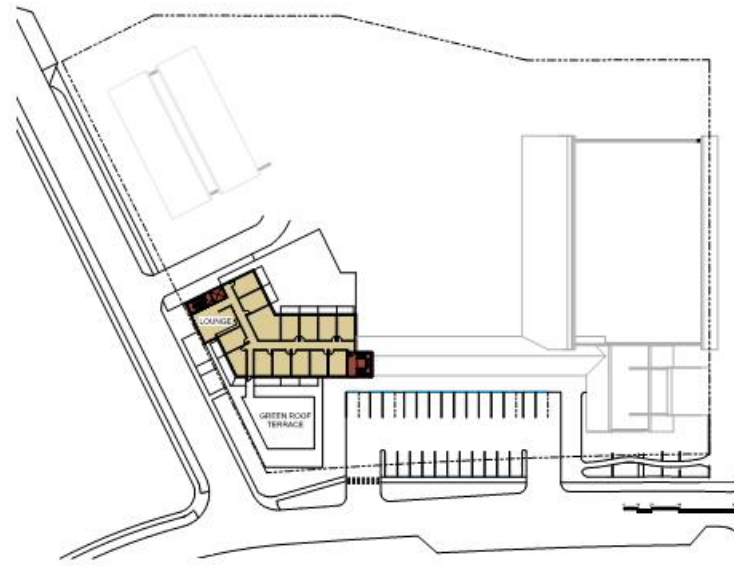
CSU ANIMAL HEALTH FACILITY- CONCEPTUAL



CSU ANIMAL HEALTH FACILITY- CONCEPTUAL



Level 3



Level 4



CSU CENTER

- Classroom and lab space
- Performing and visual arts space
- Denver Urban Extension Center
- Shared exhibit space
- Community space
- K-12 Food Systems Exploration Center
- Business incubation
- Agribusiness collaboration



IMAGINE. DISCOVER. CULTIVATE.

CSU CENTER



- Classroom and lab space
- Performing and visual arts space
- Denver Urban Extension Center
- Shared exhibit space
- Community space
- K-12 Food Systems Exploration Center
- Business incubation
- Agribusiness collaboration



IMAGINE. DISCOVER. CULTIVATE.



IMAGINE. DISCOVER. CULTIVATE.

CSU FORT COLLINS HB 15-1344 PROJECTS

- Health Education and Outreach Center: ~\$20
 - The Health Education Outreach Center will provide anatomy and neuroanatomy training in state-of-the-art laboratories. Linked to NWC via camps/outreach programs and technology.
- Translational Medicine Institute: ~\$7
 - Creating novel biologic therapies and learning opportunities uniquely focused on improving the lives of both animals and humans. Linked to NWC via camps/programs/outreach.
- Equine Veterinary Teaching Hospital: ~\$23
 - In addition to medical services, this facility will house equine sports medicine. Linked directly to NWC with rotations and camps/programs.



SITE REGENERATION

“Net Zero”
Energy and
Waste, and **One
Water**

**Restored South
Platte River**
connections to
health

ADVANCING
THE STATE OF
THE ART

Partnerships
with **NREL,**
DOE

**Education,
Demonstration,
Community
Connection**



IMAGINE. DISCOVER. CULTIVATE.

COMMUNITY OUTREACH GOALS

Mission

CSU is introducing itself as a future neighbor to the Globeville, Elyria, and Swansea neighborhoods (GES) in an authentic way that respects, listens to, and supports the existing community.

CSU approach

- Focus on getting to know the GES communities
- Communicate with and understand the community
- Deliver programming/services that provide the greatest impact to the community and reflect what may exist in CSU's facilities at the National Western Center



COMMUNITY PARTNERS IN GES



Our partners:

- **Clínica Tepeyac:** a non-profit healthcare provider
- **Focus Points Community Center**
- **Local schools:**
 - Bruce Randolph School
 - Garden Place Elementary School
 - Swansea Elementary School
- **Denver Public Library:** The Valdez-Perry library branch.
- **Grow Haus:** a non-profit focused on food security issues.

BRUCE RANDOLPH SCHOOL



Existing partnership components:

- Little Shop of Physics
- Student involvement in CSU outreach efforts/events
- Temple Grandin Equine Assisted Therapy
- AP Human Geography and AP Civics class engagement

Potential future components:

- Students @ CSU Pipeline Project
- Youth Advisory Group
- Garden collaboration
- Teacher training opportunities

ONGOING OUTREACH ACTIVITIES



Annual CSU Animal and Human Health Clinic

- Brought in partners: PetAid Colorado, Dumb Friends League, Clinica Tepeyac, University of Colorado
- Offered companion animal vaccinations, spay/neuter appointments
- Addition of human health included flu shots and health screenings
- More than 100 animals vaccinated, 35 spay/neuters performed, and 100 flu shots and health screenings.

SCHOLARSHIP INFORMATION

Admissions-based Grants and Scholarships (no additional application required)

- Upward Bound Partnership Award
 - \$2,500/year for up to 5 years
- CSU Tuition Assistance Grant
 - Guarantees to cover full tuition and fees
- Merit-based Scholarships: Depending on gpa and test scores
 - \$1,000 - \$4,000/year for 4 years

Application-based Scholarships

- First Generation Award
 - \$4,000/year for 4 years
- Monfort Scholarship
 - Tuition, fees, room and board
- Anschutz Foundation Scholarship
 - \$9,000/year for 4 years





Thank you. Questions?

IMAGINE. DISCOVER. CULTIVATE.